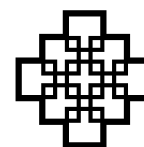


Name:	Country:	Number:
-------	----------	---------

# Part 4



**SUDOKU'07**

2ND WORLD SUDOKU CHAMPIONSHIP  
PRAGUE - CZECH REPUBLIC  
28. 3.-1. 4. 2007

1 7 x 5 = 35

20 points

2 Dots

20 points

3 Greater and Less

15 points

4 Multi

20 points

5 Big Bands

20 points

6 Paint It Black

20 points

7 Sudoku 2007

60 points

Total:


--	--	--



# 1 7 x 5 = 35

Points:

Place a digit from 1 to 9 into each of the empty squares so that each digit appears exactly once in each of the rows, columns and the nine outlined 3x3 regions.

Small numbers always placed on the border lines between selected pairs of neighbouring cells of the grid are the products of two numbers that should be in the respective pair of the neighbouring cells just above and below the clue-number.

**20 points**

		54	32	5	
		12	24	35	

		9	4	1	
		6	8	5	
		2	3	7	

	24		18		20	
	30		72	3		15 32
56				35		3
16			24			18 5
			20			
				8		5
	14					

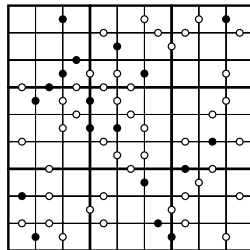
--	--	--

## 2 Dots

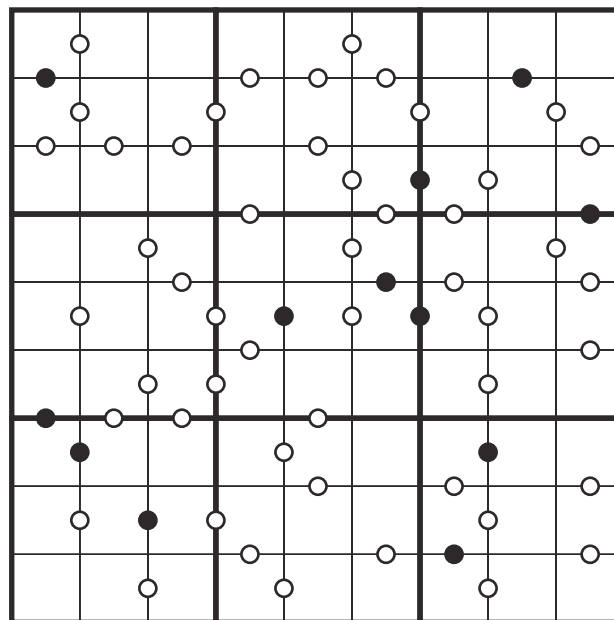
Points:

Place a digit from 1 to 9 into each of the empty squares so that each digit appears exactly once in each of the rows, columns and the nine outlined 3x3 regions.

If absolute difference between two digits in neighbouring cells equals 1, then they are separated by a white dot. If the digit is a half of digit in the neighbouring cell, then they are separated by black dot. The dot between 1 and 2 can be either white or black. **20 points**



7	3	6	1	9	8	5	4	2	
1	5	8	2	4	7	6	9	3	
9	2	4	5	6	3	1	7	8	
8	4	3	6	7	5	9	2	1	
6	1	2	4	8	9	7	3	5	
5	9	7	3	2	1	8	6	4	
2	8	1	9	3	6	4	5	7	
4	7	9	8	5	2	3	1	6	
3	6	5	7	1	4	2	8	9	

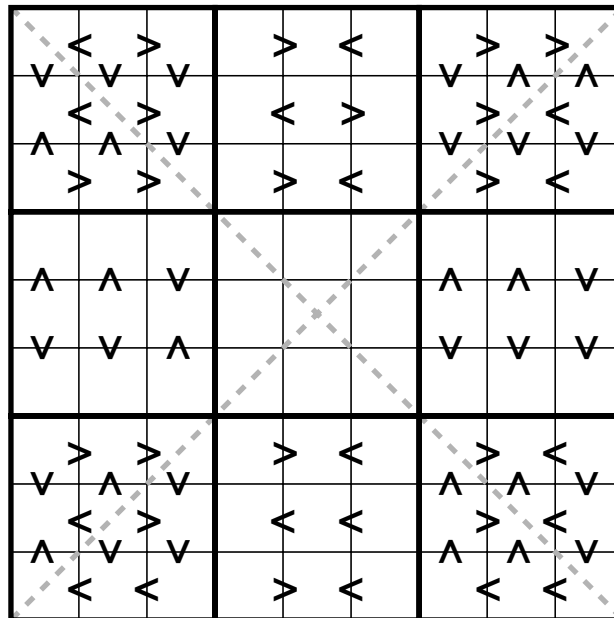
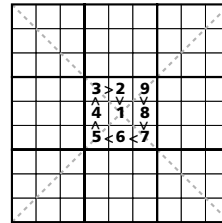
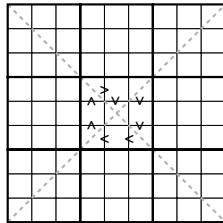


--	--	--

### 3 Greater and Less

Points:

Place a digit from 1 to 9 into each of the empty squares so that each digit appears exactly once in each of the rows, columns, nine outlined 3x3 regions and each of the two main diagonals. The filled digits must obey relationships specified with „greater than“ (>) or „less than“ (<) symbols. **15 points**



--	--	--

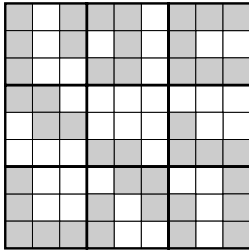


# 5 Big Bands

Points:

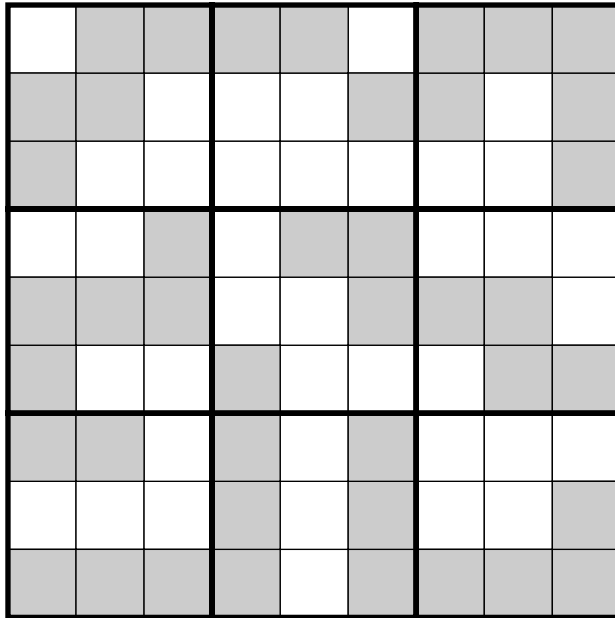
Place a digit from 1 to 9 into each of the empty squares so that each digit appears exactly once in each of the rows, columns and the nine outlined 3x3 regions.

There are six grey twisty bands 7 cells long in the sudoku grid and 7 digits long numbers. Put the numbers in the respective bands and all others digits in the grid. **20 points**



- 1973421
- 6539378
- 7159876
- 7234589
- 7846574
- 8418578

6	8	1	5	9	4	3	2	7
5	9	7	2	8	3	4	1	6
3	4	2	6	7	1	5	8	9
9	3	4	1	5	7	2	6	8
2	7	8	9	3	6	1	4	5
1	5	6	8	4	2	9	7	3
7	2	9	3	1	8	6	5	4
8	1	3	4	6	5	7	9	2
4	6	5	7	2	9	8	3	1



- 1526593**
- 2194192**
- 3458936**
- 3464136**
- 3586325**
- 7239487**

--	--	--

# 6 Paint It Black

Points:

Blacken some of the cells to find out the hidden modern art figure. The numbers on the sides of the grid give the number of black cells in each black stretch in a certain row or column. The black regions are separated by one or more empty cells. Don't pay attention to digits in the grid. Then transfer the digits from black cells into the second grid and solve sudoku. Place a digit from 1 to 9 into each of the empty squares so that each digit appears exactly once in each of the rows, columns and the nine outlined 3x3 regions. **20 points**

9	4	1	3	4	7	2	8	6	1	1	1	3
8	7	3	5	9	1	1	1	2	1	1	1	1
7	2	4	2	2	8	9	5	3	1	1	1	3
5	1	8	7	1	4	5	2	4	1	1	1	1
4	9	7	2	5	2	6	3	1	1	1	3	
1	5	7	6	8	3	7	1	3	0			
7	2	4	9	3	1	1	8	8	3			
4	3	5	8	5	2	7	1	9	1			
8	5	1	4	6	7	3	5	2	3			
4	1	4	1	4	1	3	1	1				
			3	1	1	1	1	3				
				1			1					


9		1		4		2	8	6				
8		3		9		1						
7		4		2		9	5	3				
5		8		1				4				
	9		2			6	3	1				
				9	3	1						
				8								
				4	6	7						

9	5	1	7	4	3	2	8	6				
8	2	3	5	9	6	1	4	7				
7	6	4	1	2	8	9	5	3				
5	3	8	6	1	9	7	2	4				
4	9	7	2	8	5	6	3	1				
6	1	2	3	7	4	8	9	5				
2	7	5	9	3	1	4	6	8				
1	4	6	8	5	2	3	7	9				
3	8	9	4	6	7	5	1	2				

7	4	1	6	7	4	5	2	8	4	1		
9	3	6	2	9	1	3	5	3	1	1		
8	2	6	8	2	3	9	4	1	6			
1	5	4	6	4	2	7	3	3	1	1		
2	3	7	8	5	3	8	8	4	1	1		
8	1	2	9	3	6	6	9	1	6			
6	5	7	9	9	2	7	4	1	1	1		
1	3	9	8	2	7	8	6	2	1	4		
3	2	8	5	4	3	1	7	5	4			
1	1	1	1	6	1	1	5	1				
1	1	1	1		3	1	1					
	1	4	1									
			1									


--	--	--

