



# 1 Picture

Points:

Place a digit from 1 to 9 into each of the empty squares so that each digit appears exactly once in each of the rows, columns and the nine outlined 3x3 regions. **10 points**

8	5	3	2	4	7	9		
2						4	7	
7	4	9	5	6	1	3		8
9						5		6
6						7		4
5						1	3	
3						2		
4						6		
1	7	2	6	9	5	8		

8	5	3	2	4	7	9	6	1
2	1	6	8	3	9	4	7	5
7	4	9	5	6	1	3	2	8
9	3	7	4	1	2	5	8	6
6	2	1	3	5	8	7	9	4
5	8	4	9	7	6	1	3	2
3	6	5	7	8	4	2	1	9
4	9	8	1	2	3	6	5	7
1	7	2	6	9	5	8	4	3

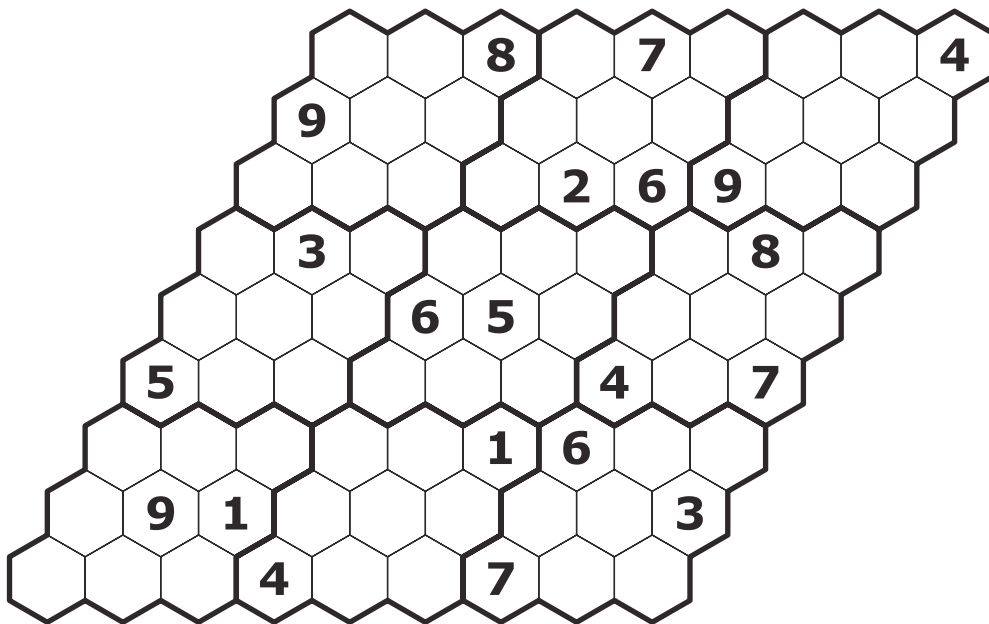
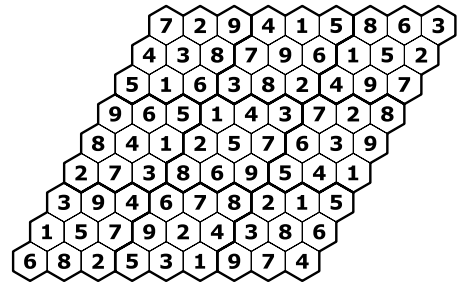
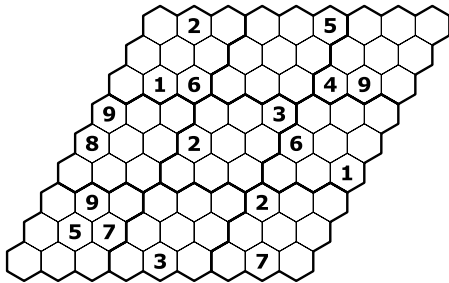
		1	5	9	7			
			2			5		
5		2					8	
8	5				3			7
	2						4	
4	1	7						2
2	6		8				7	
3				5	4	6		
			6	7				

--	--	--

## 2 Isosudoku

Points:

Place a digit from 1 to 9 into each of the empty squares so that each digit appears exactly once in each of the rows, 9-cell diagonals and the nine outlined 3x3 regions. In the shorter diagonals all digits must be different. **20 points**



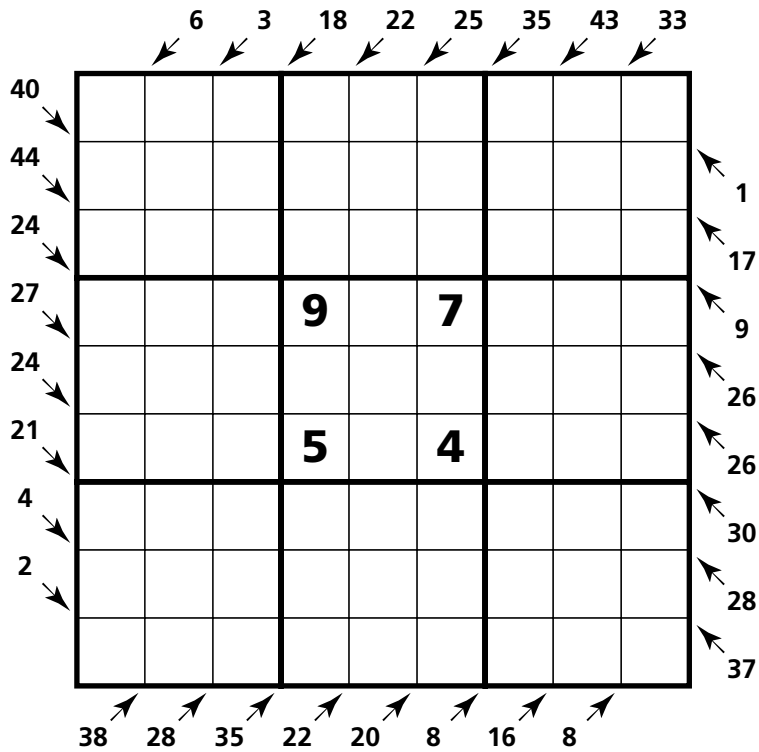
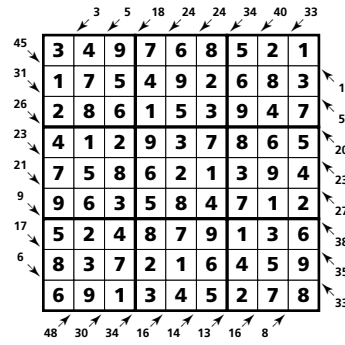
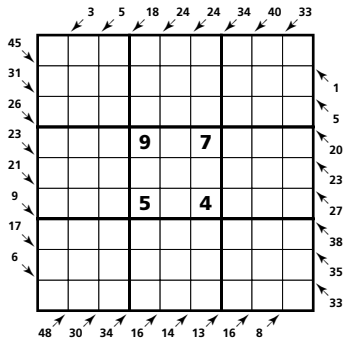
--	--	--



# 4 Little Killer

Points:

Place a digit from 1 to 9 into each of the empty squares so that each digit appears exactly once in each of the rows, columns, nine outlined 3x3 regions and each of the two main diagonals. Numbers with arrows indicate sum of the numbers in each direction. **15 points**

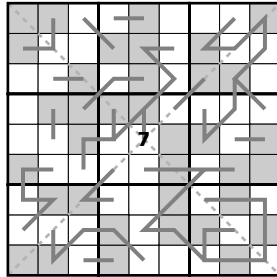


--	--	--

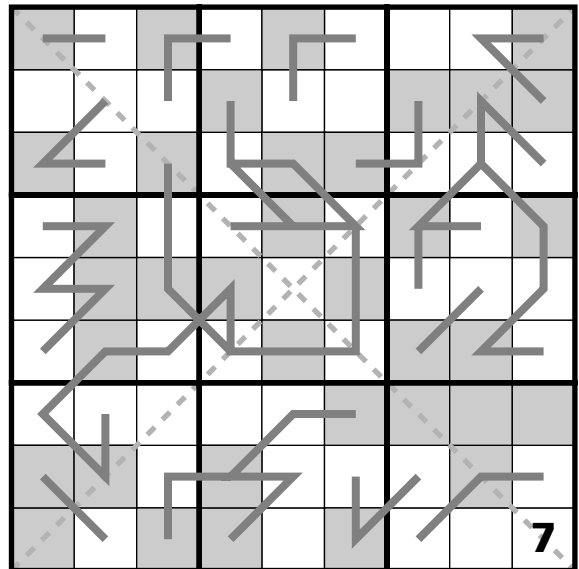
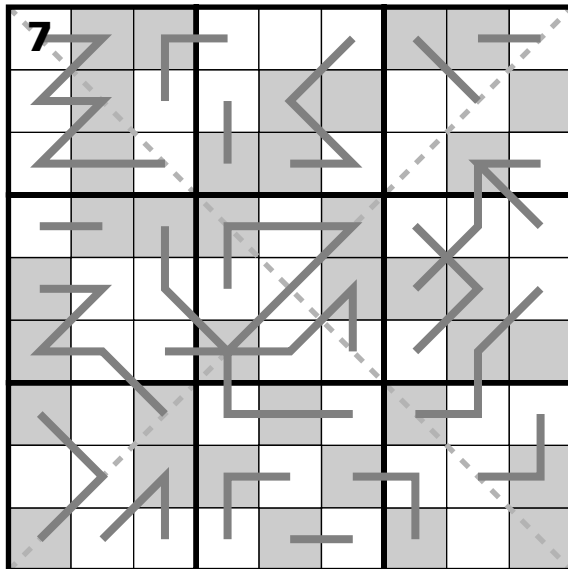
# 5 Lucky Seven

Points:

Place a digit from 1 to 9 into each of the empty squares so that each digit appears exactly once in each of the rows, columns and the nine outlined 3x3 regions. Additionally, each digit appears exactly once in each of the two main diagonals. All neighbouring cells linked with the line contain digits in arithmetical series (e. g. 234) or in a special one (e. g. 76567). Sudoku grid contains highlighted all the squares with even digits. Left 10, right 15 points. **25 points**



8	4	7	1	2	5	9	3	6
2	3	1	6	8	9	4	5	7
9	5	6	3	4	7	2	8	1
1	8	2	4	6	3	5	7	9
3	9	4	5	7	8	6	1	2
6	7	5	9	1	2	3	4	8
5	6	8	7	9	4	1	2	3
7	1	3	2	5	6	8	9	4
4	2	9	8	3	1	7	6	5

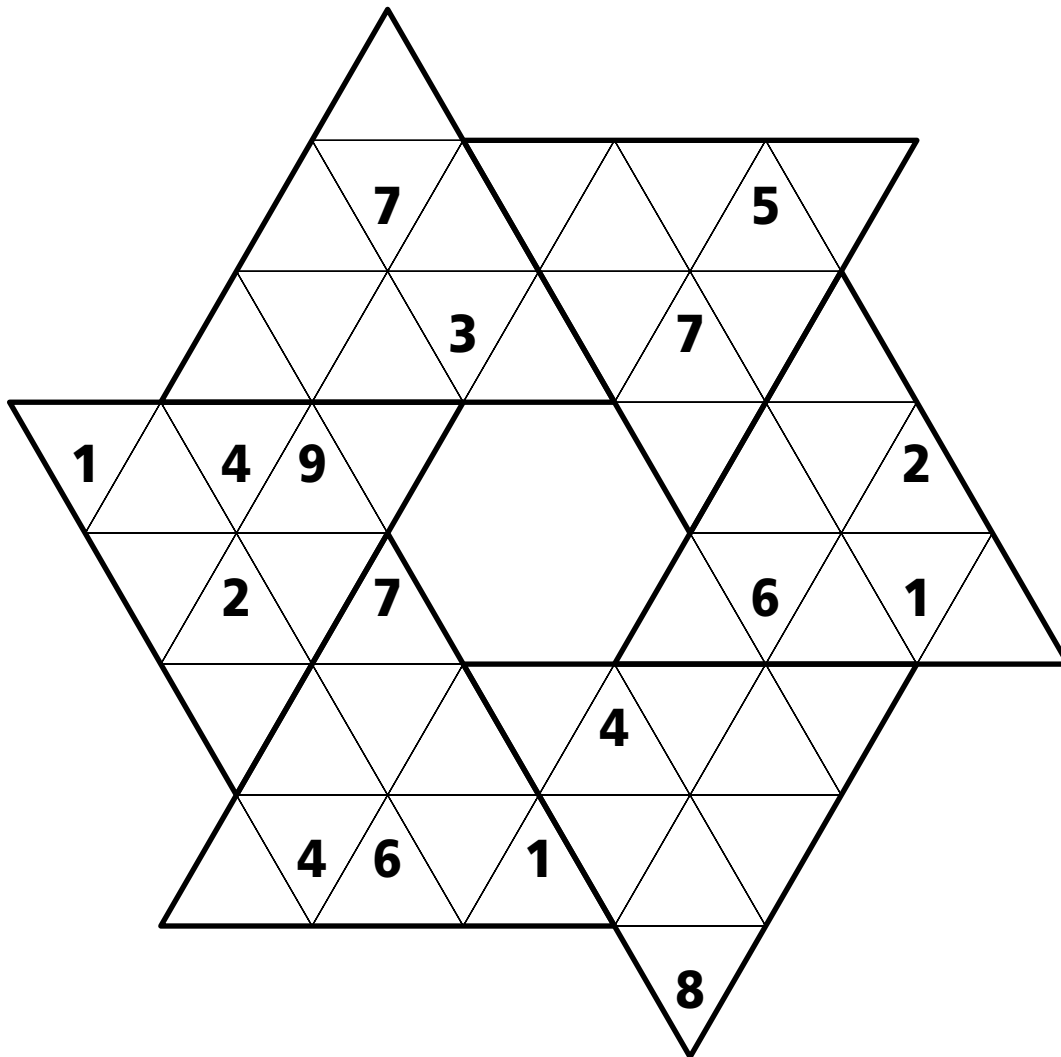
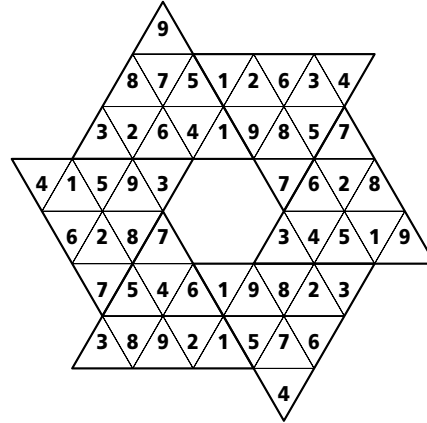
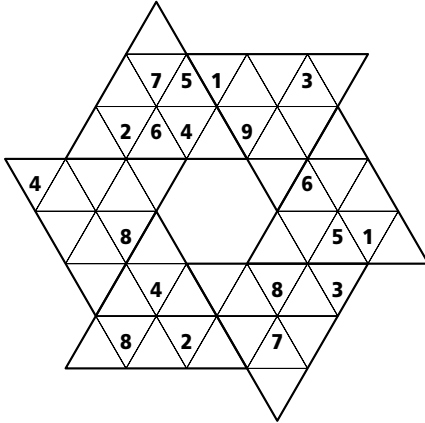


--	--	--

# 6 Star

Points:

Place a digit from 1 to 9 into each of the empty triangular cells so that each digit appears exactly once in each of the 6 large triangles and every line (of any length, even noncontinuous). **15 points**



--	--	--

# 7 Twins

Points:

Place a digit from 1 to 9 into each of the empty squares so that each digit appears exactly once in each of the rows, columns and the nine outlined 3x3 regions.

This variant consists of a pair of standard sudoku puzzles with starting digits. Substitute the equivalent values of the digits from one corresponding sudoku into the other. **15 points**

	1				7			
4	6					2		
2	8					3		
6	2	9					1	
	4	5						
3						6		
	8						6	
			6					
	7							

		1	6			9		7
7					3			
	5		8					3
2								8
			4					
		2					8	
	7			2	4			
					8			5

5	1	3	9	6	2	7	8	4
4	8	6	7	3	5	1	2	9
7	2	9	8	1	4	6	3	5
8	6	5	2	7	9	3	4	1
1	7	4	6	5	3	2	9	8
3	9	2	1	4	8	5	6	7
9	5	8	3	2	7	4	1	6
2	4	1	5	8	6	9	7	3
6	3	7	4	9	1	8	5	2

3	8	1	6	4	5	9	2	7
7	2	4	9	1	3	8	5	6
9	5	6	2	8	7	4	1	3
2	4	3	5	9	6	1	7	8
8	9	7	4	3	1	5	6	2
1	6	5	8	7	2	3	4	9
6	3	2	1	5	9	7	8	4
5	7	8	3	2	4	6	9	1
4	1	9	7	6	8	2	3	5

5	1					2		
			5					
	2	4	6		8	9		5
		7			4	8		
1				7			9	3
	9				1			
2	3			8		4		
				6			8	2
	8		2				5	

			8			3	7	
	3		9		7	4		
		8						9
		1				2		
4			2			9		
	5			9			8	
				2	5		3	
	1	5	4					7
3							1	

--	--	--

# 8 Distance

Points:

Place a digit from 1 to 9 into each of the empty squares so that each digit appears exactly once in each of the rows, columns and the nine outlined 3x3 regions.

The distance between two digits in each row and column is specified. The order of these digits is from left to right or from top to bottom. **20 points**

6-5: 4									
4-2: 7									
3-1: 5									
6-4: 6									
4-1: 5									
4-9: 5									
6-1: 7									
5-2: 6									
3-7: 5									

1-2: 7  
 5-3: 7  
 5-9: 5  
 1-8: 5  
 5-8: 7  
 6-4: 7  
 4-1: 5  
 9-6: 7  
 7-8: 6

3	1	6	8	4	9	5	7	2
8	5	9	1	2	7	6	4	3
2	7	4	5	3	6	8	1	9
1	9	2	4	7	8	3	5	6
5	4	3	6	9	2	7	8	1
7	6	8	3	1	5	2	9	4
4	8	5	2	6	1	9	3	7
9	2	1	7	8	3	4	6	5
6	3	7	9	5	4	1	2	8

**1-4: 4**  
**1-2: 4**  
**7-9: 4**  
**7-3: 4**  
**6-3: 5**  
**3-7: 6**  
**4-1: 7**  
**1-5: 5**  
**6-5: 6**


**6-2: 5**  
**4-8: 5**  
**4-8: 2**  
**4-7: 6**  
**8-3: 7**  
**1-8: 6**  
**1-9: 5**  
**5-3: 7**  
**5-7: 5**

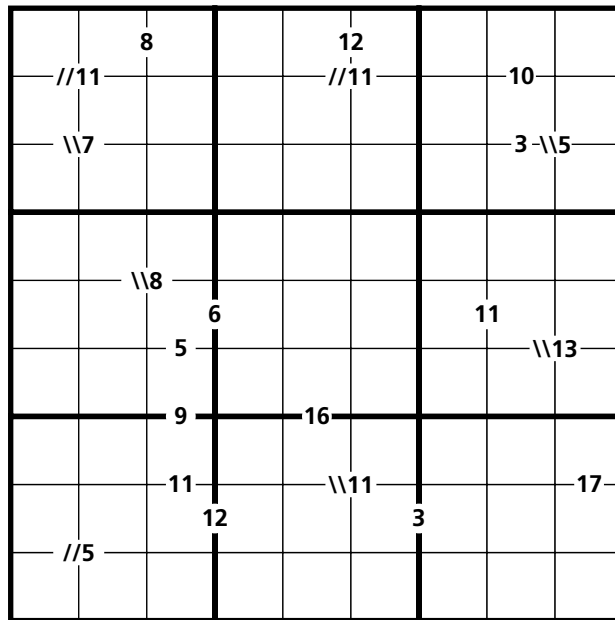
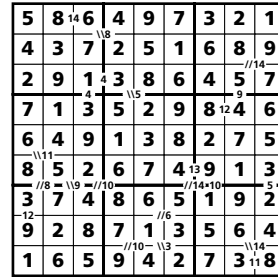
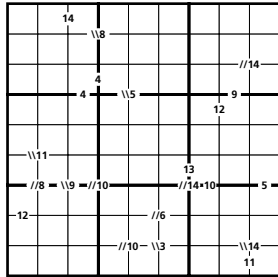
--	--	--

9 9 + 8 = 17

Points:

Place a digit from 1 to 9 into each of the empty squares so that each digit appears exactly once in each of the rows, columns and the nine outlined 3x3 regions.

Small clue-numbers are either placed on the border lines between selected pairs of neighbouring squares of the grid or placed after slash marks on the intersections of border lines between two diagonally adjacent squares. Each small clue-number is the sum of two digits in the two squares that are horizontally or vertically or diagonally adjacent to each other. The position of each pair of diagonally adjacent squares is indicated by either two forward slash marks // or two backward slash marks \\. **15 points**



--	--	--